

# CHAPTER I

## INTRODUCTION

### 1.1. Background

Literature has always mixed in human life. According to Teeuw( 1980:11), in creating literary works, the Author does not depart from the "cultural emptiness," but is inspired by the complex realities of life, which are all around. Culture that affect literary works cannot be separated from language as language is an element of culture that gives a sign to a message. Language itself can be a symbol that represents the meaning of culture.

Symbols play an important role in human life, even though sometimes humans don't understand it because that's why a literary creator always gives a symbol to attract a literary work. Symbols can also interpret a mess age or the meaning of words. Usually synonymous with signs that provide information about something. According to Eco (1988:27), sign is used to provide information, indicating something that others want to know too. These signs can be found in the context of scenarios, pictures, texts, film etc, which are interpreted in a literary work.

Literary works is man-made which fictitious in nature by using the medium of language, either implicitly or explicitly, which are considered to have aesthetic or beauty values. Literature is a social institution that uses language as its medium. Literary language has an expressive function, showing the tone and attitude of the speaker or writer ( Wellek and Warren, 1993: 15).

In the literary works, symbols is sometimes used as a means of human communication because symbols provide a meaning that is more than words or emotions. Symbols provide information or convey meaning in the form of words, sentences, pictures, gestures, actions,

colors and others. Symbols are useful for conveying indescribable aspirations, abstract, emotional ideas that are difficult to express. Symbol as a communication tool is a medium of language, both orally and in writing, which humans use anywhere and anytime. The symbols created in literary works also cannot be separated from the factors of the socio-political, economic, cultural, or personality environment experienced by an author in creating literary works in the form of novels, where there are also symbols showing the identity of the community or individual.

In the novel "Flawed" found symbols presented by Cecelia Ahern in the course of the storyline. Flawed is a dystopian novel. Which was released in 2016. Disability , Mistakes in character and individual personality, in the form of lying, stealing, fighting against the authorities. So it is declared or labeled flawed and will result in receiving punishment from the government in the form of prohibition rules and exclusion and limited interaction with the community. Cecelia Ahern describes the social life of a person with various socio-political and cultural conflicts that Celestine North has to experience, who is the main character in the novel "Flawed".

Semiotic theory and qualitative method is very appropriate and help researcher in analyzing the symbols contained in the novel "Flawed" by Cecelia Ahern. For this reason, the researcher took the title "symbolism in the novel" Cecelia Ahern, because Flawed is a symbol of gaps, personality defects in a social and political culture marked by the letter F. There are also other symbols in contributing to the story in the Novel by used semiotic theory explained in the background above.

The researcher chooses the novel as the medium of research, because the novel is also a literary work and in the novel cannot be separated from symbols which are the language in deciphering words. The novel that will be analyzed is titled "Flawed" by Cecelia Ahern,

because in the novel the most prominent symbol is the letter F (Flawed) which makes the process of the storyline more interesting. There are other symbols such as, Colors, words, facial expressions and others. And help the researcher to find the implied meanings in the novel. Researcher really find this novel very interesting because it is also true to its title'' Flawed'' which depicts a main character named Celestine at the age of 18 who has to fight because she is involved in a socio-political conflict with Crevan, the head of law in her country, as well as the father of her lover. So the ''F'' symbol that is printed on several parts of Celestine's body makes her have to go through difficult times starting from having to leave her boyfriend to being hated by her friends and having to live a new life by the rules made by the Guild.

## **1.2. Statement of Problems**

Based on the background above researcher got two statement of problems as follows:

1. What kinds of symbols are found in the novel ''Flawed'' by Cecelia Ahern?
2. How does the impact of Flawed symbol in the novel 'Flawed'' by Cecelia Ahern?

## **1.3. Scope of the Study**

In the novel '' Flawed '' there are many conflicts that have a story solve by puzzles, because in the novel tell about social human have character flawed which can damage and influence to the other characters, and then Celestine offer a solution, she believe a Flawed not objective to circles and state.

This research is more focused then the problem and limitations only of kinds of symbols and how impact of Flawed symbol build and contribute in the novel. Researcher will

Analysis of the symbols there are that will complement. The researcher uses of the Semiotic theory in the novel ‘‘Flawed’’ by Cecelia Ahern

#### **1.4. Objective of the Study**

Based on the statement of problems above the researcher formulates some objectives of the study as follow:

1. To identify kinds of symbols in the novel ‘‘Flawed’’ by Cecelia Ahern.
2. To analyze the impact of Flawed symbol in the novel ‘‘Flawed’’ by Cecelia Ahern.

#### **1.5. Significance of Study**

There are some benefit that are expected by the researcher those are:

##### **1.5.1. Theoretical Significance**

This research, the benefit that can be taken is that this research is able to be a part and has a role in knowledge literary researcher, specially symbols and this research can add sources of information, using the symbolism. Hopefully this research can open new horizons and contribute to literary research in the symbol used semiotic theory.

##### **1.5.2. Practical Significances**

This research is also useful for readers to know Flawed story as a source of knowledge, and makes it easier for readers to understand literary works, enriching their literary knowledge; developing the concept of thinking about the novel ‘‘Flawed ‘’by Cecelia Ahern as teaching or experience.

#### **1.6. Review of Related Literature**

Related literature, researcher took and followed several research results from the same literary works in analysis symbols in the novel, namely;

The first, from Ronie, Hellystia ( 2019) whit the title “ Hierarchy of the main Character of a novel flawed by Cecelia Ahern, in the faculty of Letter and Culture, English Department, Gunadarma university Depok. Their research using an approach and analysis in terms of physiologic needs, love and belonging needs , self esteem, self actualization, and there are five levels of hierarchy of needs that main character can be satisfied. By using a qualitative description method and supported by Maslow’s theory.

The second, Nono(2017) from Samratulangi University Manado with the title “symbols in novel The Scarlet Letter by Nathaniel Hawthorn”, Faculty of Cultural Sciences Samratulangi University Manado. The approach used is an intrinsic approach, by analysis symbols in the form of action words, objects, characters, phrases and main symbols, namely letters A and Pear. By using the theory of Landy (1972) and Kennedy (1991) used qualitative description method in explaining the symbols contained in the novel.

The third, Kusumoriny,Amalia, (2019), Semiotic study of symbolism in Dan Brown’s “INFERNO" Novel. Pamulang University. This study uses a descriptive qualitative method which identity, to analyze, and to describe the symbols found in Dan Brown's Inferno novel using semiotic theory Chales Sandres Peirce (1991). The data for the finding and analysis symbol which are related to Christianity, Dante Alighier's life, The Seven Deadly Sins, Transhumanism and Humanism movement in the novel.

The fourth, Anasthasya(2019) analysis of signs in the film "The Black Panther by Ryan Coogler". Faculty of Cultural Sciences Samratulangi University Manado, this research to identify and classify the types of signs as well as to analyze the meaning of signs used in The Black Panther film. She uses the theory of Charles Sanders Peirce there are three types of

signs, namely icon, indexes, and symbols in *The Black Panther* and each sign has different meaning. The process of identifying, classifying, and analyze each scene containing the signs used the represent aspect. The method used in this study is a descriptive method

From the explanation above, the same focus is about symbol. But in the study, researcher is focusing on what kinds of symbol and how does the impact of flawed symbol in the novel ‘‘Flawed’’ by Cecelia Ahern. The researcher uses semiotic theory, in particular definition Symbol to answer the researcher questions. Moreover, the result of analysis is different. This analysis will identification kinds of symbols and investigate the impact of Flawed symbol. The researcher gets benefits from the previous studies above are increasing the understanding of researcher about Symbol.

## **1.7. Theoretical Base**

The description of theoretical basis is implemented to answer the research questions regarding the kinds of symbol and the impact of flawed symbol which used Semiotic theory. This research encompasses concepts of sign, symbol and function of Flawed symbol.

### **1.7.1 Definition of the Semiotic**

Semiotic is a literary discipline derived from the Greek *semeion* meaning sign. When viewed in terms of terminology, semiotics is defined as a science that studies a wide array of objects, events throughout culture as a sign. The importance of semiotic for Peirce is wide ranging. As himself said’’ *it has never been in my power to study anything, mathematic, ethis, metaphysics, gravitation, thermodynamics, optics, chemistry, comparative anatomy, astronomy, psychology, phonetics, economics, the history of science, whist, men and women, wine, metrology, except as a study of semiotic’’*. ( Peirce: 1977, 85)

According to Peirce in one of his many definitions of a sign, Peirce write, *I define a sign as anything which is so determined by something else, called its object and so determines an effect upon a person, which I call its interpretant, that the later is thereby mediately determined by former.* ( Peirce: 1917: 478) . Peirce's view explains how a sign can represent something else, thus a sign represents something that represents it. Peirce's concept of semiotics focuses on the taxonomic relationship between signs in literary works.

### 1.7.2 The Concept Of Sign

Based on sign , Peirce focuses of a taxonomic enthusiast, sign can be divided into three basic categories icon, index , and symbol . From there explain below this:

#### 1.7.2.1 An Iconic

An icon is a physical object that resembling what it presented. Representation be marked by resemblance (Sobur, 2003: 158).For example pictures, statues, paintings, and so forth. Peirce (in Sobur, 2003) explains that an icon is a sign whose relationship between the signifier and the signified is scientifically concurrent.

#### 1.7.2.2 An index

An index is a sign that shows a natural relationship between a sign and a signified that is a causal relationship, or a sign that directly refers to reality (Sobur, 2003: 159). The most obvious example that shows a sign in the form of an index is smoke as a sign of fire. An index is a sign that is present in a way that is interconnected due to a fixed relationship of reference characteristic.

#### 1.7.2.3 A Symbol

A symbol is a sign that shows the natural relationship between the signifier and the signified (Sobur, 2003: 42). The relationship between them is arbitrary or arbitrary, or a relationship based on convention (community agreement). A symbol is a form that marks something other than the embodiment of the symbolic form itself. For example, as a flower, it refers to and carries an image of a fact called '*flower*' as something that exists outside of the symbol form itself.

The sign letter *F* is a symbol that appears in the story, which describes a person who is flawed by having to accept the punishment of the Guild. Researcher analyze that sign a conversation established in accordance with the agreement stipulated join by the society in which the symbol is still applies. Based on the above explanation, the researcher used a Peirce's semiotic theory novel by Cecelia Ahern because in this the novel is composed some symbol and researcher related to taxonomic in the form of icons, indexes, and symbols in differentiate novel by Cecelia Ahern, want to give understood about symbol especially in the novel "Flawed" by Cecelia Ahern

### 1.7.3 The Concept of Symbol

In other literature that describes symbol. Symbol in an etymologically the term "symbol" comes from the word symbol in English which is the root word *symbolicum* in Latin. While in Greek the words *symbolon* and *symbollo*, which are also the root of the word symbol, have several meanings, namely "to give an impression", "to mean". and "interesting".

Symbolic sign are characterized by an entirely arbitrary relationship to their referent. That is to say, one cannot deduce a given meaning from a symbolic sign the correlation between signifier and signified is entirely conventional. (Peirce : 1835: 83)



Thus researcher employed a theory of semiotics in analyzing symbols, as the novel suggests a symbol appears by the writer. Therefore this research will expose the kinds and impact of the distinctive symbol itself on the characters in the novel by Cecelia Ahern uses Peirce's taxonomic about sign also include Symbol.

#### 1.7.4 The Function Of The Symbol

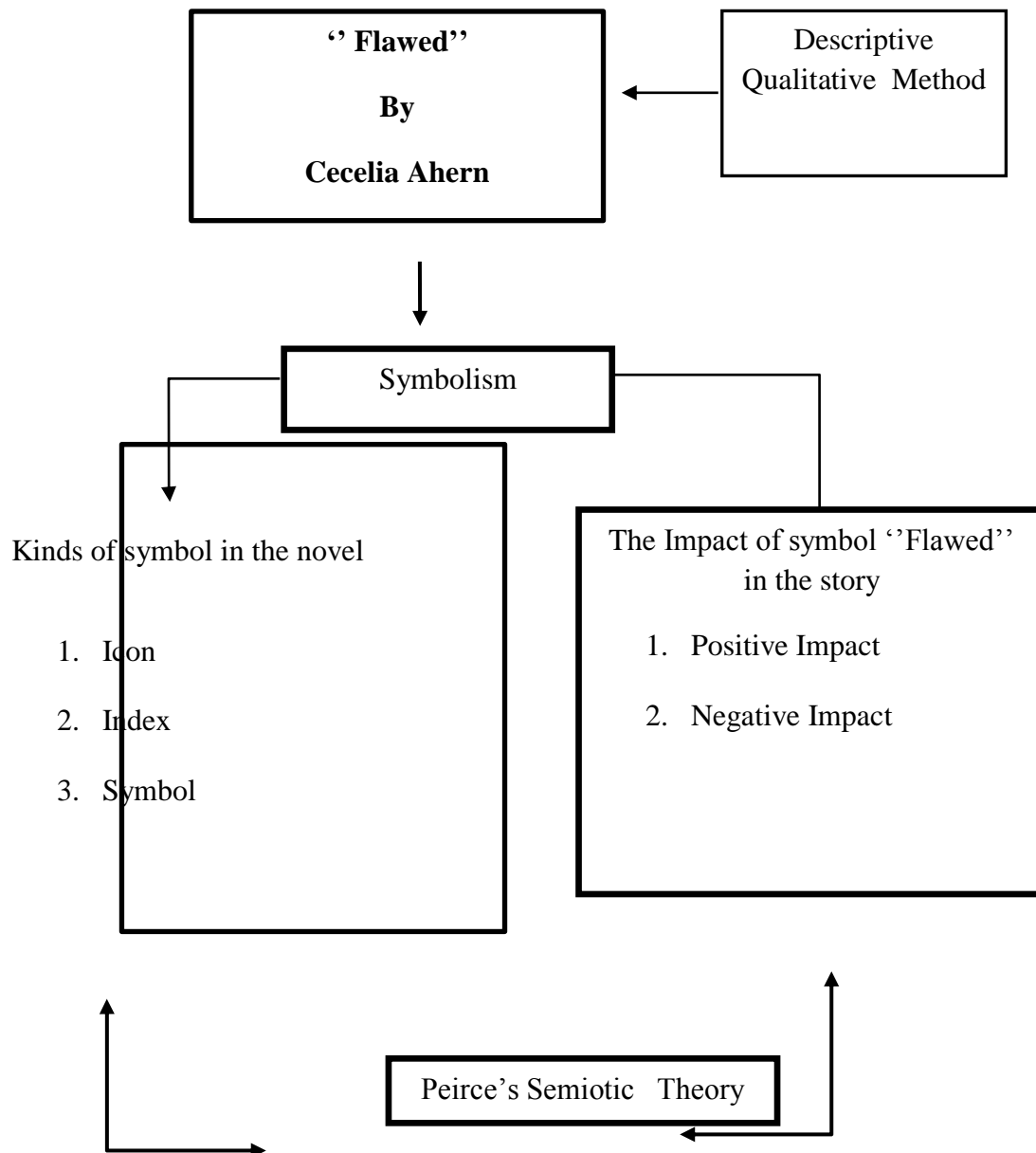
The function of the symbol referred to by Godfrey Lienhardt (Saliba, 1976: 84). in research "is the purpose of getting the desired effect. Symbols not only suggest changes to moral and social status but also bring such changes to a society. Generally such a symbol is identical to its reference, so people behave toward such symbols as hunting rituals, intended for a desired purpose, of obtaining food with the help of gods or spirits. However, this ritual was accompanied by the actual action of hunting equipped with various weapons. According to his , the symbol not only brings cool results, but its action also serves as a complement and preparation for practical or technical action

The other literary sign or a symbol is a stimulus that marks the presence of something else. The meaning we give to a symbol is a product of social in interaction and description our agreement to apply a particular meaning to a specific symbol. Examples with a ring that is symbol of official and emotional ties, and so most people associate it with a positive connotation. Nevertheless, some see marriage as an oppressive institution. Those people will give a negative reaction to wedding rings and all the other symbol that they perceive as that situation demean ( Richard West, 2008: 99).

Therefore, every symbol is a sign, and not every sign can be a symbol. The story in the novel "Flawed" is not only elaborated what is symbols appear, but each symbol has a meaning that explains to humans about something. The word " Flawed " itself has given

meaning " mistake, imperfect, blemished, deficient, distorted, damaged, invalid, weak, a punishment" for every human which against the rule of law Government.

### 1.8. Conceptual Scheme



Based on the conceptual scheme above, the researcher will elaborate the topic by descriptive method, and applies literary semiotic theory to looking kinds of symbolism in the novel "'Flawed'" by Cecelia Ahern. The conceptual, shows that researcher will analyze the

kinds symbols and to know meaning as a contribute the actors to found solution to mistake human. This researcher will also look what the effect of symbol in the plot of story.

## **1.9. Method of Research**

Methods are very important in a study, the success or failure of a study will be greatly influenced by whether or not the researcher chooses the method to be used. The research method is an orderly and systematic way to implement something (Al Barry, 2001: 45). Every study always uses a method to prove that the research results are correct. The research method that the author will use in this study is a qualitative method.

### **1.9.1. Qualitative Method**

According to Bogdan and Taylor (in Moleong, 2005: 4) qualitative research is a research procedure that produces descriptive data in the form of written or spoken words about the people or observed behavior. So, this method is descriptive qualitative because the data is in the form of descriptions and notes from the source in the form of writing that can be used as a reference in relation to the object to be studied. The object of study the research in the novel *Flawed* (2016: 402 ) by Cecelia Ahern.

## **1.10. Technique of Collecting Data**

The technique that used by the research in collecting the date is as follow:

### **1.10.1 Library**

The researcher need some references and information to support the analysis. Library is a good place to find some references like journal and script.

### **1.10.2 Internet Research**

Using the internet to search for data as references from journals or articles related to collect the data. The researcher was browsed internet to information about semiotic and symbol. In the Internet has many references, if could not found some references in the library.

### **1.11 Technique of Analyzing Data**

Data analysis is the process of organizing and sorting data into patterns, categories and basic description units so that themes can be found and work hypotheses can be formulated as suggested by the data (Moleong. 2007: 280). There are several ways to analyze data, including:

#### **1.11.1. Classification**

The researcher is using classification in the order to analyze the data. Researchers can compile and classify data according to the statement of the types of symbols in the novel and their relationship with the main character in the novel *Flawed by Cecelia Ahern*.

#### **1.11.2. Making Transcription**

Transcription the research making transcription of data in the form of symbols, words, or sentences, phrases as evidence to make it easier for researchers to find in the novel *Flawed by Cecelia Ahern*

#### **1.11.3. Analyzing Data**

In the process of data analysis, the researcher take data from each type of symbol that exists as a representation for further analysis, so that the meaning of each type of symbol can be seen.

## **1.12 Conclusion**

In this step, the researches will get the conclusion of the impact symbols result of the analysis kinds of symbols among like Picture, word, sentences, by using qualitative method and semiotic theory in the novel.