

CHAPTER I

INTRODUCTION

1.1 Background

Literary work is the result of a person's life story which is considered memorable and has special values that can be a motivation and also life learning which is arranged in such a way and poured in written form so that it is called a literary work.

According to Esten (1991:8) States that a literary creation comes from the reality of life in society (objective reality).Scientific reality that is captured by the literary senses is only a natural or raw source of inspiration which is then processed through the literary imagination that produces higher and noble values. The object of research here is the novel, where the novel is one of several literary works that are quite well known among the public, most of the stories raised in the novel are the story of someone's life whether it's a story of love, family or friendship, which is considered to be a lesson and motivation for others which is then poured in written form.

According to Wellek and Warren (1993: 282) Novel is a story that paints a picture of human life and behavior from time to time.

The title of the researcher's research here is about Interpersonal response of Character Marianne, in which the researcher explains how Marianne responds to other people and what factors influence the way Marianne responds to other people. Researchers are interested in studying Marianne's interpersonal response character because Marianne has different behavior from several other characters in the novel,

one of which is the way she responds to other people. The response between the person is the response that is shown when someone loses communication with other people, both in terms of speech and body movements.

According to Wiryanto in Novianti Riska Dwi (2017) Communication between individuals is communication that takes place in a face-to-face situation between two or more people. both organized and in crowds.

In studying Interpersonal response of character Marianne, the object of research is the Normal People Novel, the second novel written by Sally Rooney which was published in 2018, where this novel tells about Teenagers who have life problems that are almost not much different from the problems in the story. faced by teenagers in general such as love problems and family problems. The researcher interested in studying this novel because as part of a millennial generation the issues raised and the stories in this novel are common for the research, whether experienced in the firsthand or witnessed. therefore the research interested to studying interpersonal response of the characters Marianne.

From several characters in the novel, the researcher is interested in studying Marianne's character because she has different behavior from other characters. This story begins with Marianne in high school, Marianne lives with her mother and older brother, Marianne's father died since Marianne was a child, Marianne's life is very sufficient, her mother is a lawyer but it does not guarantee of Marianne's happiness, Marianne does not have a good relationship with her mother and older brother, they always underestimated Marianne in everything, besides that since Marianne was little her father often used violence to her mother and Marianne was often beaten by her father.

Marianne's character is unsocial child, the children at her school don't want to be friends with Marianne because they think that Marianne has a mental disorder through the attitude she shows, scolding her teacher back for reprimanding her and other strange things. Everything changed after graduating from high school, Marianne's social life changed, Marianne, who had no friends, then made many friends and became a famous student on the campus where she studied.

Therefore the researcher is interested in studying about Interpersonal Response of character Marianne In studying the interpersonal response of Marianne's character, the researcher uses two theories, the first is the theory of Krech and Ballachey and also Guilford, Guilford describes 3 main characteristics of interpersonal response, namely, tendency to play freedom, Social tendencies, sympathetic and introverted, and the last is Expression tendency Aggressive response. In addition to studying the interpersonal response of Marianne's character, the researcher also examines factors that influence Marianne's interpersonal response, including from the family side, because feeling rejected and treated badly by her family makes Marianne grow up to be a closed child and have an aggressive response to others, such as always thinking negative to everyone and chooses to cover himself from his environment. and the second factor is her environment, in high school Marianne is shunned by her friends because they think Marianne has a mental disorder because of her behavior and she also often gets bullied by some of her friends. Everything changed when Marianne graduated and went to college, her life changed. She then began to open up to her environment and live her life normally. In studying the interpersonal response of Marianne's character, the researcher uses a structuralism approach.

1.2 Statement of Problem

As has been said above, the researcher focuses this research on the character Marianne Sheridan through,

1.2.1 How are the Interpersonal Response of Character Marianne Portrayed in the novel Normal People by Sally Rooney?

1.2.2 What Are the Factor Influence to the Interpersonal Response of Character Marianne in the novel Normal people by Sally Rooney?

1.3 Scope of the Study

The discussion here focuses on the Interpersonal Response of the character Marianne Sheridan in the novel "Normal people".

1.4 Objective of the study

The objectives of this research are:

1.4.1 To Analyze the Interpersonal Response of Marianne's character.

1.4.2 To Investigate the Factor Influence to the Interpersonal Response of Character Marianne

1.5 Significances of the Study

In this research, there are several hopes of researchers including:

1.5.1 The researcher hopes that this research can be a reference for readers in analyzing literary works, especially novels

1.5.2 The results of this study on the Interpersonal Response of the character Marianne Sheridan, are expected to add insight for friends who want to review normal people's novels.

1.5.3 The research hope the results of this study can be useful for researchers and readers.

1.6 Review of Related Literature

The following is a list of previous studies that have the same theory, method and object of research with the researcher's research, including:

The first is Karisa Ardelin in Universitas Sanat Dharma Yogyakarta (2021), discussed the topic of "Irish Begrudgrey as reflected is Sally Rooney normal people" the difference with the research of the researcher here is the character and society in normal people novels in general and Begrudgrey which focuses on the main character in the novel. While the research here focuses on Marianne's social behavior and the factors that influence her social behavior.

The second from Erdinaya Lukiati Komala, discusses the "influence of interpersonal response traits," the Chinese Muslim community on renewal communication. The similarity of this research with the research of researchers is that they both look at the interpersonal response of the three categories, namely, the tendency to play, the tendency to socialize, and the tendency to express. However, the difference in the object of study here, if the research researcher here examines the interpersonal response of Marianne's character in the Novel Normal People, while the previous research discusses interpersonal response in people of Chinese descent in general.

Meanwhile Third, Yuliana Renika at all, in Universitas Cikarang (2021) discusses "interpersonal communication in increasing employee motivation during the covid-19 pandemic" in contrast to the research of the researchers here, namely if the research uses novels as the object of study with a discussion of the interpersonal response of Marianne's character.

Fourth, from Purwanti Christiana in Universitas Pelita Harapan, Tangerang, Banten (2020) with research on "the existence of language in interpersonal

communication, an interdisciplinary approach." The purpose of this study is to describe the existence of language in communication by using an interdisciplinary approach, while the research of researchers here is to determine the interpersonal response of Marianne's character with the object of study in Novel.

The difference between the researcher research and some of the previous studies above is that the researcher's research here focuses on the Interpersonal Response of Marianne's character in the Normal People novel using Structuralism theory.

1.7 Theoretical Basis

To support this research in analyzing the novel "Normal People by Sally Rooney", the research include several theories regarding the approach and concepts below:

1.7.1 Theory of Structuralism

Abrams theory (1997:130) which states that "The structuralism approach is called the objective approach, which sees literary works as autonomous structures, independent of elements that are outside themselves. Literary studies in this approach see literary works as independent of socio-cultural elements, authors, and readers. Therefore, all things that are outside the work, such as the author's biography, psychology, sociology, and history, are not included in the analysis.

According to the charter in (Hawkes, 1978:16) "structure as a fabric of elements that form a unity and whole is based on three basic foundations, namely (1) the idea of roundness, (2) the idea of transformation, and (3) the idea of self-regulation. As a structural unit, the elements in it do not stand alone in the overall meaning. The materials in the process go through a transformation, so that the structure is not static but dynamic. The whole (wholeness), the elements conform to

a set of intrinsic rules that determine both the whole structure and its parts: transformation (transformation), the structure is capable of transformation procedures that allow the formation of new materials.

In reviewing a literary work called a novel, here the researcher will only focus on the intrinsic element because the object of the research here is the social behavior of Marianne's character, without looking at external factors.

1.7.2 Character

Character is a description of the behavior of an individual in a story characters can be divided into two categories, namely Antagonist and Protagonist, where the protagonist is the main character in the story while the antagonist is the challenger character.

According from Birkert in Tussadiyah Siti Halima 2017 "Character is an imagined person in story whom we know from the work we read on the page". Besides that there are also other opinions from Pierre 1984:90. in Tussadiyah Siti Halima who said that "Characters are the people in the text, there is part of the ordinary life that meets when the readers read".

Meanwhile, According to Waluyo (2001:101-102) characters are fictional individuals who experience events or events in various events. While the characterization is a matter of how to present the characters, how to build and develop the character of these characters in the form of acting. The definition of character and characterization have different meanings, the character is in the form of an individual and characterization is the process of presenting the individual in a story.

Characteristics of a character can be formulated in three dimensions, including:

1. Physiological, or inner dimensions, such as age, gender, body condition, character, height and low, facial features, skin color, and other physical characteristics.
2. Sociological dimensions or characteristics in relation to public relations, for example social status, occupation, position, level of education, outlook on life, religion, ideology, social activities, organization, ethnicity, and ethnicity.
3. Psychological dimensions or psychological background, such as mentality, morality, temperament, personal feelings, attitudes, behavior, level of intelligence, and expertise in certain fields.

1.7.3 Theory of Interpersonal Response

The way other people respond to each person is different, some are good and some are not. Most of the ways of responding that a person shows are caused by several factors, including congenital or environmental factors.

According to Krech, Crutchfield and Ballachey (1996-193-194) "In a society, each person develops a characteristic pattern of interpersonal response that is characteristic of his social behavior. These traits are consistent and stable tendencies to act that show individual behavior in different social situations"

1.7.3.1 The Main Nature of Interpersonal Response

This list of properties is quit describing the properties that have been calculated and discussed by various researchers. Review (Guilford 1959).

1.7.3.1.1 Tendency to play Freedom

Under this title, there are influence, dominance, social initiative, and freedom. These four tendencies are considered to be most related to determining the way a person performs his role in interpersonal behavior events.

This category consists of several aspects in it, but researchers will only use one of them, namely Freedom.

1.7.3.1.1 Freedom

Prefers to do his own thing, believes in doing things his own way, doesn't seek support or advice, is emotionally independent.

1.7.3.2.2 Social Tendencies

In this category there are characteristics of interpersonal response which mainly touch on the individual's social relation with others, his liking for others, his concern and trust in others, etc. people who score high on these four social tendencies tend to relate easily to others, identify with them and are usually skilled in managing community relations.

In this second category, namely Social Tendencies, there are also several aspects contained in it, but researcher will only use two aspects, namely, Sympathetic and then unable to be community.

a. Sympathetic

Paying attention to the feelings and desires of others, showing compassionate and generous behavior, defending the weak and oppressed.

b. Introvert

If social skills are like, participate in social problems, enjoy being with other people, be friendly. If you are unable to socialize, it is the opposite of that.

1.7.3.3 Expression Tendencies

In the third category there are four tendencies related to the style of functioning of interpersonal functions, namely with respect to the way individuals express themselves in certain ways in reacting to others. This trait in its extreme form can manifest in almost anything a person does in a social situation. One can

compete endlessly: other people may be able to continually find targets for aggressiveness: another person may also like to show off at every possible opportunity: another person may feel “extremely tormented” when he is exposed to the merciless gaze of another.

In the category of expression Tendencies there are also several aspects, but the researcher only uses one of these aspects, namely Aggressive.

a. Aggressive Response

Directly or indirectly attacks others, shows displeasure and challenges power, likes to fight, and always thinks negatively.

1 7.5 Factors influence Interpersonal Response of Marianne

Here the researcher will examine that factors that influence the Interpersonal response from Adolescents

1.7.5.1 Family

According to Elizabeth B. Hurlock (1978:256) “Relationships with family members are not solely in the form of relationships with parents, but also with siblings, grandmothers, and grandfathers, will affect children's attitudes towards people outside the home environment. If the home environment as a whole fosters the development of good social attitudes, it is likely that the child will become a social person or vice versa”.

The role of the family is really needed in the growth of a child, good or bad the treatment that a child gets by his family will greatly affect his behavior later, such as how he talks and responds to other people. In this study, the researcher also discusses verbal violence from a family to a child, we know that verbal violence is violence that is done by someone psychologically, which is shown to other people, such as dropping someone mentally, and bullying. According to Baryadi in Stevan

Wijaya Talim Universitas Pelita Harapan (2021) Verbal violence is abusive language behavior such as cursing, threatening, expelling, slandering, coercing, inciting, embarrassing and insulting people.

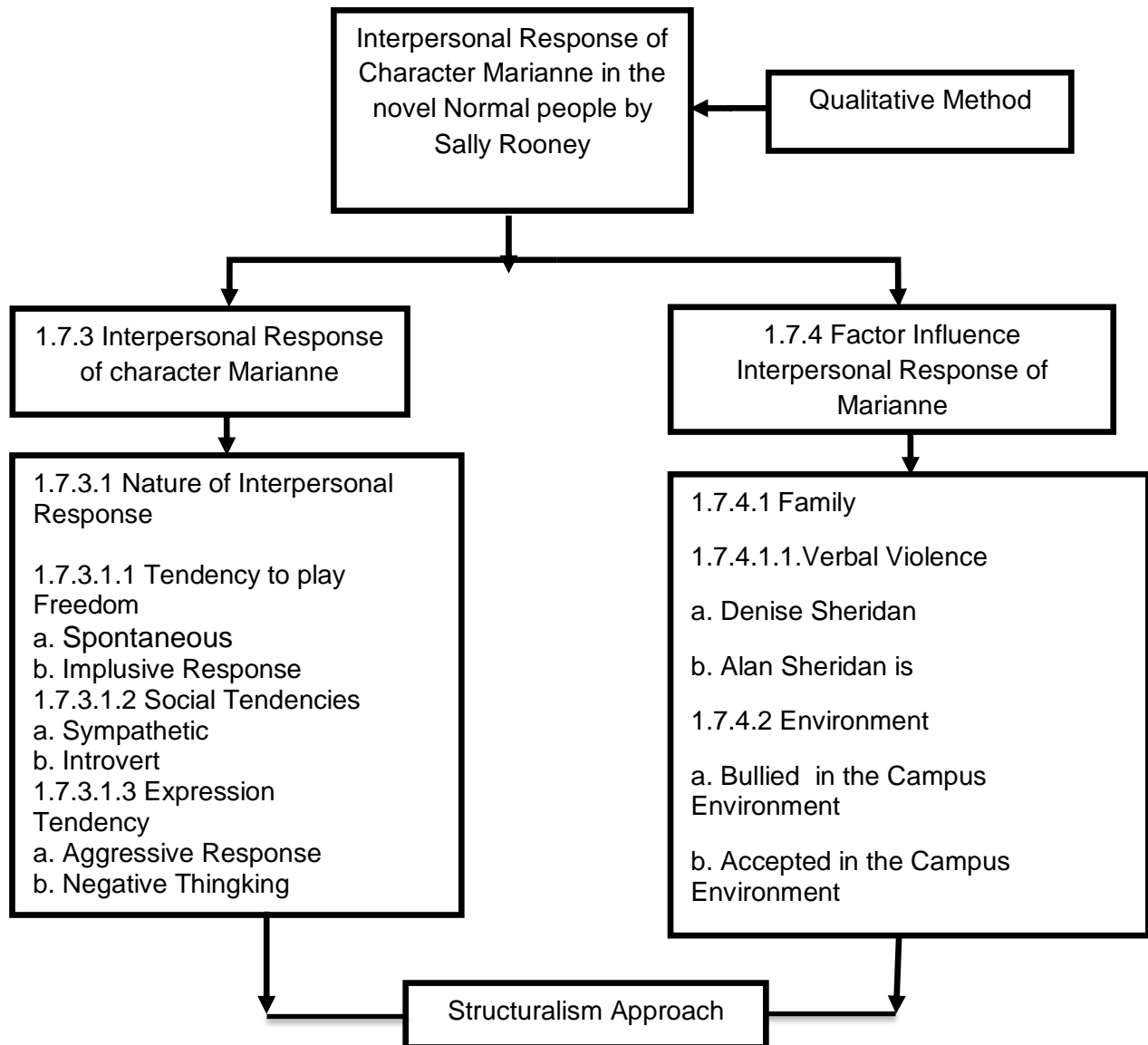
1.7.5.2. Environment

Besides the family, the environment is the second most important factor in shaping a child's behavior.

According to Elizabeth B. Hurlock, (1978:257) Early social experiences outside the home complement those inside the home and are important determinants of children's social attitudes and behavior patterns. If their relationships with peers and adults outside the home are pleasant, they will enjoy social relationships and want to repeat them, and vice versa.

When children are happy with relationships with outsiders, they will be encouraged to behave in ways that are acceptable to that person. Because the desire for recognition and social acceptance is strong in late childhood, the influence of peer groups is stronger than during the school years when young children are less interested in playing with peers. In a friendly environment, bullying cannot be separated from bullying, we know that bullying is an act of ridicule which is included in physical violence which causes the victim to experience mental stress and trauma. As the opinion of Sejiwa in Zakiyah Ela Zain Universitas Padjajaran (2017) Bullying is an act of using power to hurt a person or group of people, either verbally, physically, or psychologically so that the victim feels depressed, traumatized, and helpless.

1.8 Conceptual Scheme



The following is a schema that clarifies the description of the object of study and the theories used by researcher in studying Interpersonal Response of character Marianne in the novel Normal People by Sally Rooney.

1.9 Method of Research

The method that researchers use here is a Qualitative Method.

1.9.1 Qualitative Method

According to Bogdan & Biklen, S. (1992:21-22) in Puput Saeful Rahmat “Explaining that qualitative research is one of the research procedures that produces

descriptive data in the form of words or writings and the behavior of the people being observed Explaining that qualitative research is one of the research procedures that produces descriptive data in the form of words or writings and the behavior of the people being observed.”

1.10 Data Source

In this study, researchers used two sources in obtaining data Among other things, primary data and secondary data.

1.10.1 Primary data

The primary data or object of research is the Novel Normal People By Sally Rooney, an Irish writer, this novel was published in 2018 with 287 pages.

1.10.2 Secondary Data

The researcher uses several theories in this research, among others, theories about literature, and several social theories related to the title of the research that the researcher discusses. Sources of theory that researchers get are from the Internet such as articles, journals, and several books from the library.

1.11 Technique of Collecting Data

In collecting data, the researcher uses several techniques, including:

1.11.1 Reading Comprehension

That is by researcher studying and understanding the data source, namely Novels, by reading carefully

1.11.2 Library

After reading the novel and getting the right title, the researcher then looks for theories that the researcher will use in helping researchers to analyze the title, one of which is by reading books in the library.

1.11.3 Internet

In addition, researcher also use internet media to search for previous research journals as a reference point for researchers and also researchers download several books that researchers did not find in the library.

1.12 Technique of Analyzing Data

The techniques used by researchers in analyzing data were:

1 12.1 Interpretation

Interpretation technique is that the researcher reads the novel "Normal People" as the object of the research study carefully in order to interpret the problems in the novel, then it is appointed as the research title and then looks for answers to the problems raised.

1 12.2 Explanation

The results of the above interpretations are then described by the researcher in the form of text or something that can be understood

1 12.3 Conclusion

Finally, the researcher draws conclusions from the results of previous interpretations related to Interpersonal Response of Character Marianne in the Novel Normal People using the Structuralism Approach.